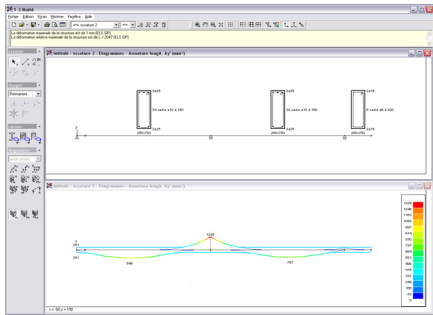


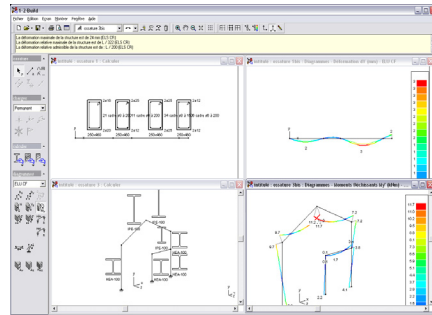
1·2·Build

Structural design analysis of steel, concrete & timber structures in 1, 2, 3...



Without any effort...

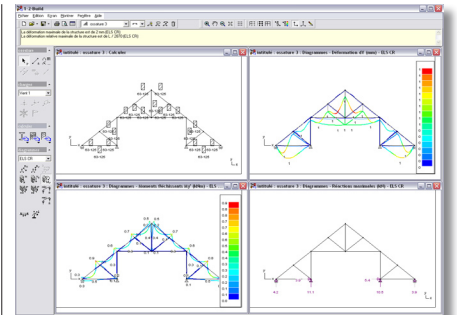
Within 1·2·Build's user-friendly environment, you simply draw a beam of frame structure on the screen. Next, the model is completed graphically and interactively with boundary conditions, permanent loads and variable loads.



...the most optimal design...

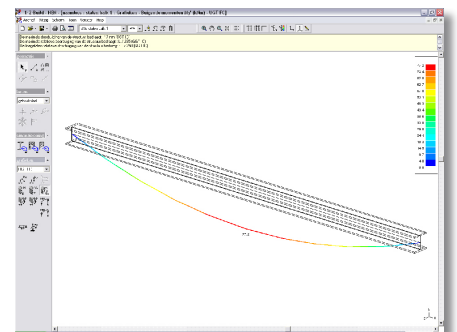
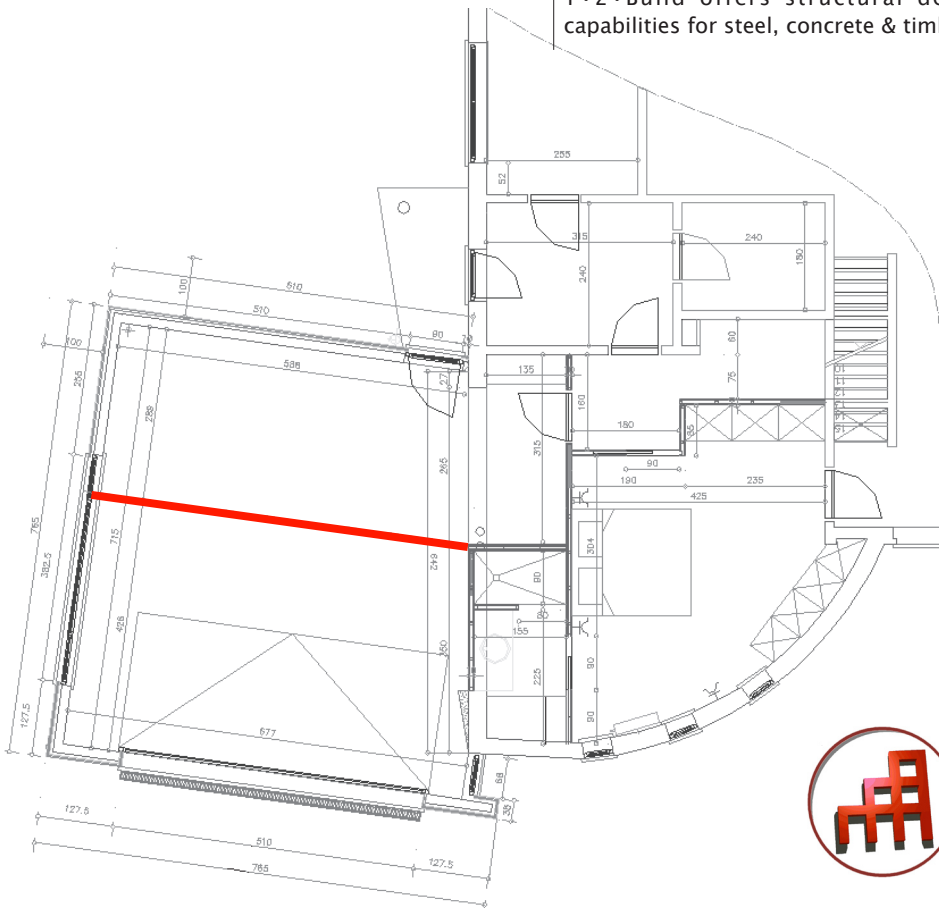
1·2·Build is the perfect tool for your day-to-day design analyses and for the estimation of material quantities. At any time, it will propose you the most optimal solution for your design projects.

1·2·Build offers structural design capabilities for steel, concrete & timber.



...a profitable investment!

1·2·Build is a complete solution which offers you (for a fixed price) all necessary functionality for optimal structural design, up to the creation of a concise and highly readable analysis report.



BuildSoft

1 · 2 · Build

1·2·Build is a product made by BuildSoft.

BuildSoft develops high-quality software solutions for structural design analysis. Our goal is to empower our customers with efficient, easy-to-use software products with a highly intuitive user interface.

The BuildSoft team is committed to establishing a long-term relationship with its customers. A relationship in which you can count on our full attention and support. A relationship in which we use our professional expertise to act as a reliable and highly competent partner.

The BuildSoft team stands for an extensive experience in structural modeling and design analysis in general, and in the application of limit state design methods in particular. And it shows! Both our products' functionality and the quality of our customer support reflect our high degree of engineering professionalism.

Features

Graphical, interactive definition of geometry, boundary conditions and loads. Import of model geometry through DXF.

Elastic analysis of beams, columns and 2D portal frames & trusses for a combination of concentrated and distributed loads.

Integrated loads descent capability for automated definition of concentrated and uniformly distributed loads.

Reinforced concrete:

- * evaluation of longitudinal and transverse reinforcement requirements according to Eurocode 2.
- * creation of reinforcement plan & reporting of concrete volume and total reinforcement weight.
- * calculation of maximum deflection, taking into consideration creep effects.

Steel:

- * standard cross-section library, containing IPE, HEA, HEB, HEM, L, T, U, W, circular and rectangular cross-sections.
- * evaluation of most optimal cross-section according to Eurocode 3.
- * reporting of total weight and painting surface.
- * verification of cross-section resistance and member buckling stability according to Eurocode 3.

Timber:

- * evaluation of minimum cross-section according to Eurocode 5.
- * reporting of total timber volume.

Export of material quantities to spreadsheet.

Automatic re-analysis upon modification of model data.

Automatic creation of analysis report.

Availability

Windows NT/2000/Me/XP & MAC OSX (installation MS Virtual PC for MAC OSX mandatory).

Benefits

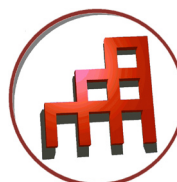
1·2·Build allows you to size beams and columns safely and accurately already in the early design phase, based on a minimum number of data.

During the later phases of the building process, 1·2·Build is an excellent tool to verify proposals made by the building contractor or the engineer. Thanks to its very flexible working environment, you can verify an unlimited number of variants in no time.

1·2·Build always delivers the most optimal result: beam elements with minimum height, steel cross-section with minimum weight, ... such that you can really design economically.

For more information on 1·2·Build, please contact:

1·2·Build is a product of BuildSoft NV



Hundelgemsesteenweg 244 / 1
B-9820 Merelbeke, België
☎ +32 (0)9 252 66 28
📠 +32 (0)9 252 66 29
✉ info@buildsoft.eu
🌐 www.buildsoft.eu

www.structuraldesignanalysis.com