

# PowerConnect

## Overview of supported shear and HSS connection types according to Eurocode

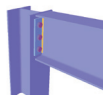
MOMENT CONNECTIONS

SHEAR CONNECTIONS

HOLLOW STRUCTURAL SECTION CONNECTIONS

### SINGLE-SIDED BEAM TO COLUMN FLANGE

Flexible end plate



Bolted angle cleat

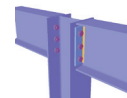


Fin plate

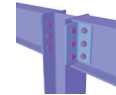


### DOUBLE-SIDED BEAM TO COLUMN FLANGE

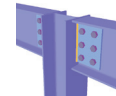
Flexible end plate



Bolted angle cleat



Fin plate



### SINGLE-SIDED BEAM TO COLUMN WEB

Flexible end plate



Bolted angle cleat

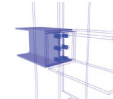


Fin plate

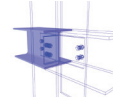


### DOUBLE-SIDED BEAM TO COLUMN WEB

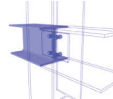
Flexible end plate



Bolted angle cleat



Fin plate

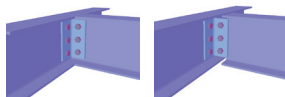


### SINGLE-SIDED BEAM TO BEAM WEB

Flexible end plate



Bolted angle cleat



Fin plate



### DOUBLE-SIDED BEAM TO BEAM WEB

Flexible end plate



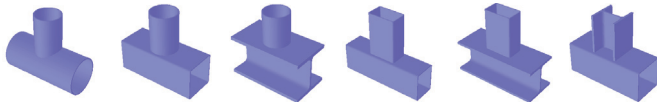
Bolted angle cleat



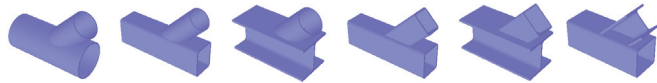
Fin plate



## T CONNECTIONS



## Y CONNECTIONS



## X CONNECTIONS



## DY CONNECTIONS



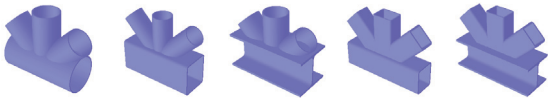
## N CONNECTIONS



## K CONNECTIONS



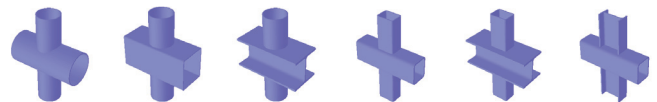
## KT CONNECTIONS



## DK CONNECTIONS



## TT CONNECTIONS



For more information on PowerConnect, please contact:

PowerConnect is a product of BuildSoft NV



Hundelgemsesteenweg 244/1  
B-9820 Merelbeke, Belgium  
tel: +32 (0)9 252 66 28  
fax: +32 (0)9 252 66 29  
info@buildsoft.eu  
www.buildsoft.eu

[www.structuraldesignanalysis.com](http://www.structuraldesignanalysis.com)